

CASE STUDY

Transforming Data Management with GenFlow: Automating ETL for Efficiency, Accuracy, and Scalability



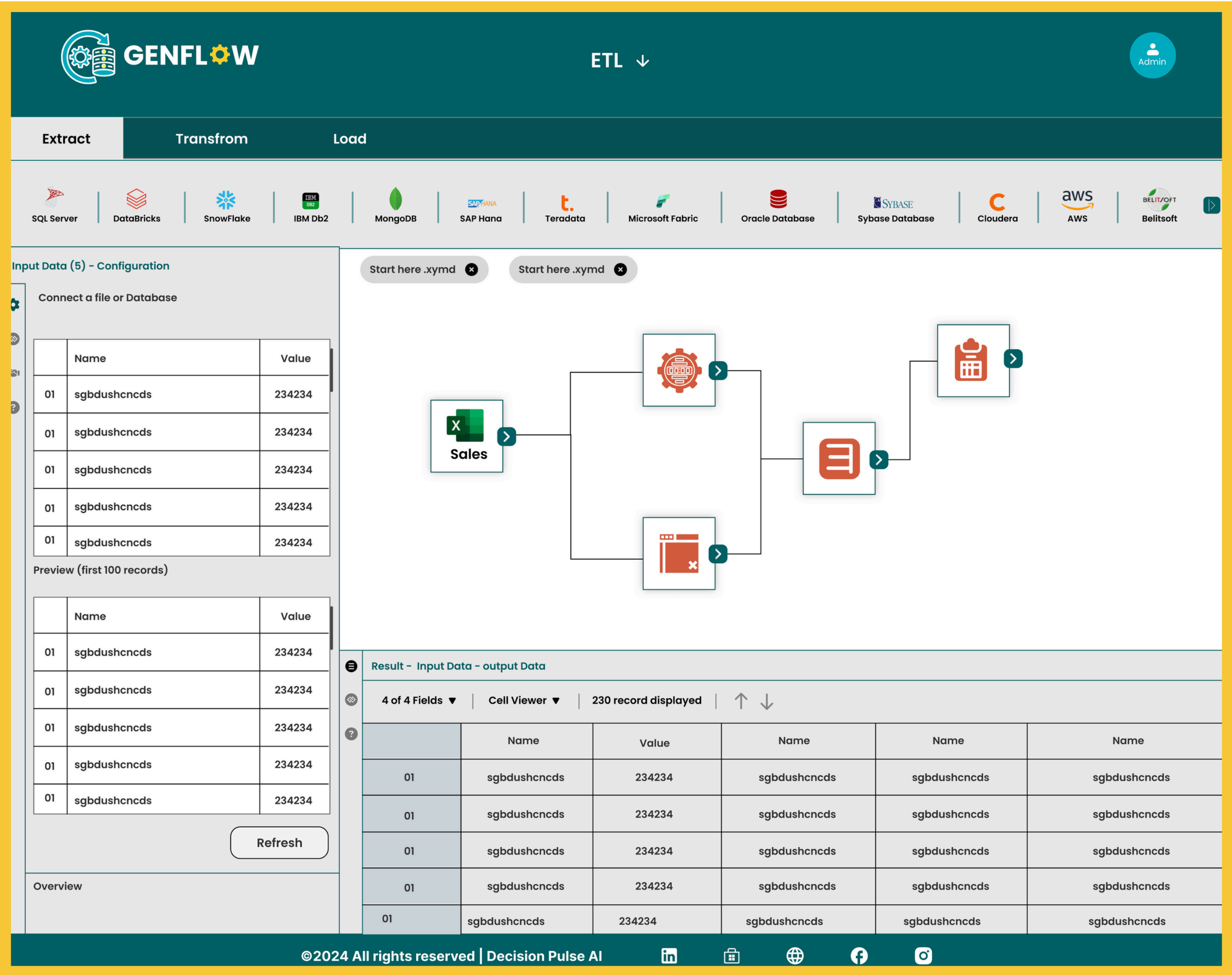
Background and Business Problem

A multinational organization operating across industries such as food, tobacco, hygiene, pharmaceuticals, and technology solutions struggled with outdated, manual spreadsheet-based processes. These inefficiencies led to slow, error-prone workflows, fragmented data management, and complex reporting needs. With 21 specialized operating centers, the company sought a modern solution for seamless business planning, data integration, and advanced analytics



Business Challenges

- Inefficient Processes: The reliance on manual data entry caused delays, errors, and lengthy planning cycles, impacting decision-making.
- Fragmented Data Management: Siloed data across departments made integration and tracking cumbersome.
- Complex Reporting Needs: The company required flexible reporting formats, including Excel and PDF, with conditional formatting.
- Communication Barriers: Users needed the ability to communicate directly within Power BI via email or Microsoft Teams.







## Solution

- **Automated Data Pipelines:** Replaced manual spreadsheet-based processes with AI-driven, automated ETL workflows.
- **Real-Time Data Processing:** Enabled continuous data updates for faster, more accurate insights.
- **Seamless Data Integration:** Connected cloud, on-premises, and API data sources into a unified system.
- **Scalable Infrastructure:** Designed to handle growing data volumes without performance issues.
- **Built-in Data Validation:** Ensured data accuracy through automated cleaning and validation processes.
- **User-Friendly Interface:** Provided a no-code, drag-and-drop workflow builder for easy use.
- **Advanced Analytics Support:** Integrated machine learning and predictive analytics for data-driven decision-making.
- **Secure & Compliant:** Implemented role-based access control (RBAC) and encryption to ensure data security.



## Approach and Outcomes

- **Automated Data Integration:** Eliminated manual spreadsheet-based processes by implementing a centralized, automated ETL pipeline.
- **Real-Time Processing:** Enabled real-time updates, ensuring timely insights and reducing data discrepancies.
- **User-Friendly Interface:** Introduced a no-code, drag-and-drop interface for workflow creation, making it accessible to all users.
- **Advanced Reporting & Analytics:** Integrated machine learning capabilities to enhance predictive analytics and optimize decision-making.
- **Seamless BI Integration:** Provided direct connectivity with Power BI and other analytics tools for improved reporting and data visualization.



## Value

- **Enhanced Efficiency:** Automated workflows reduced manual effort, accelerating business processes.
- **Improved Data Quality:** Automated validation and cleaning minimized errors and ensured data consistency.
- **Scalability:** GenFlow easily adapted to growing data volumes, supporting future expansion.
- **Faster Decision-Making:** Real-time insights empowered teams with accurate and timely data.
- **Cost Savings:** Reduced operational costs by eliminating inefficient manual data handling.

